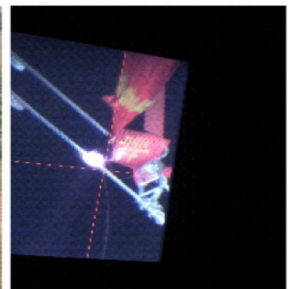




DLS-JG02 Laser Clearance System

- No harm to the wire.
- Can operate with electricity, no impact on electricity.
- No need to ascend, 400 meters long-distance operation.
- High clearing efficiency, the scene within 1~30 minutes to complete the clearing.
- Full HD eight groups of pre-set position accurate aiming.



► Technical Parameters

Main unit of laser transmitter

- Laser wavelength: $1080 \pm 1\text{nm}$
- Maximum output power: 300W/500W
- Rated output power: 0 ~ 500W continuously adjustable
- Operating voltage: 220V
- Operating current: 6.8A
- Operating Temperature: -10°C ~ 50°C
- Operating Humidity: $>90\%$.
- Weight: 30kg(300W)/35kg(500W)

Intelligent laser targeting device

- Imaging resolution: 1080P
- Core Component: Embedded Intelligent Alignment Judgment Chip
- Imaging distance: 0 ~ 400 meters
- Image memory: embedded 24 groups of collimation memory function

Chip

- Can not be light imaging: capture the 1064nm wave length spot
- Zoom adjustment mode: Automatic
- Focal length: 57 times

Electrically Controlled Head

This device is used to stabilize and support the laser emission output and focusing collimator, intelligent laser aiming device, intelligent laser display device and front-end safety warning device. It provides a good operation platform for the effective control of the whole laser stable emission. It is the "legs and feet" of the whole laser clearing device. It also provides an excellent basic platform for the transportation and movement of the whole device. Its biggest feature is lightweight, stable and efficient. The device is mainly divided into two parts: device support part and device mobile rotation part; device support part is mainly to stabilize and support the laser emission output and focusing collimator, intelligent laser aiming device, intelligent laser display device and front-end safety warning device and other equipment, device mobile rotation part is mainly for the rotation of the above devices to provide the corresponding function of mobile positioning.

Safety management system for laser operation

The system is designed for the safe operation of the laser clearing device. Since the laser clearing device is a Class 4 energy-efficient laser transmitter, the laser beam emitted is very high in energy. In order to effectively control the overall operation and safety of the laser clearing device, this device is designed to effectively control the operation and safety of the laser clearing device. This device is designed to effectively control the operation and management of the laser equipment. So that the overall laser clearing device must be through the device management authorization, so that the trained professional operators to operate. This ensures safe and reliable operation.

Laser output and focusing collimator

- Maximum launching distance: 400 meters
- Effective clearing distance: 0~400 meters
- Laser spot size (diameter): 1~12mm (adjustable)
- Operating temperature: -20°C ~ 50°C
- Operating Temperature: $>90\%$ of the
- Clearance objects: non-metallic materials (kites, plastics, banners, etc.); tree barriers; ice floes, etc.

Display and control equipment (wireless tablet)

- Display resolution: 1080P
- Display alignment: cross-scale centering - Display: 11 inches
- Interface: wifi
- Memory: 64G
- Recording :Support

Intelligent Laser Control System

This device is mainly used to control the rotation of the laser output device, so that the laser output device can accurately align with the obstacles to be removed. It is embedded with an intelligent coding chip, which enables the device to align quickly according to the positional parameters such as height, distance, and angularity of the obstacles. It can also use different speeds and fine tuning functions according to different distances, heights, and angles of the obstacles, so that it can align the obstacles efficiently. It can also use different speeds and fine tuning functions according to different distances, heights and obstacles, so as to realize the purpose of removing obstacles.

- Software Accuracy: 16-bit
- Calculation Accuracy: 20 K/S
- Database: 99 user-defined programmable targets - 200 total target information database.
- Port hand controller with built-in RS232 interface - Automatic cutting: Supported
- Support mode: tripod support
- Support weight: 20kg
- Rotation mode: intelligent electric dual-axis DC servo type - Rotation mode: 9-speed gear control



ZHEJIANG DALI TECHNOLOGY CO., LTD

Add: 639 Binkang Road, Hangzhou, P.R.CHINA, 310053

Tel: +86-571-86695603 Fax: +86-571-86695600 E-mail: sales@dali-tech.com